

www.spsystems.net



SPS M105B Blue+ Battery®

Technical Specifications



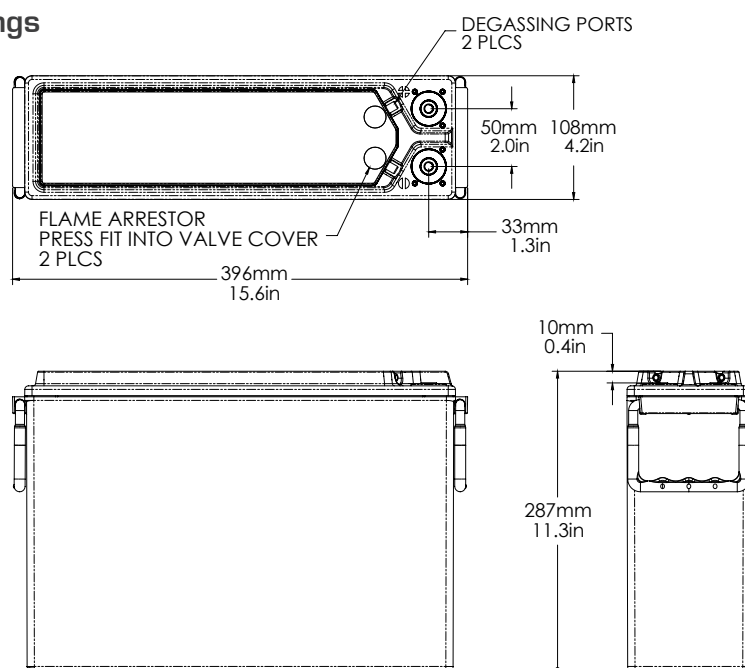
Electrical

20 hour Capacity to 1.75 VPC @ 25°C (77°F)	105 Amp/Hour
Reserve Minutes	220
Bulk Charge Voltage	14.8v @ 25°C (77°F)
Float Charge Voltage	13.6v @ 25°C (77°F)
Cold Cranking Amps (CCA)	820
Impedance (1kHz)	2.6 mΩ @ 25°C (77°F)
Conductance	1,846 S
Short Circuit Current	3,500 A
Maximum Charge Current	no limit

Dimensions

Height	287 mm (11.3 in)	Weight	35 kg (76 lbs)
Width	108 mm (4.2 in)	Terminal	Female M8 x 1.25
Depth	396 mm (15.6 in)	Terminal Torque	8.0 Nm (71 in-lbs)

Drawings



All NorthStar batteries are compliant with: Telcordia SR4228, Bellcore GR-63-Core, Issue 1; British, German, and Russian telecom standards; UL approved. NorthStar is registered to ISO 9001 and ISO 14001.

Stationary Power Systems | SPS

8733 Lakewood Drive Suite 207 | Windsor, Ca. 95492

Office: (877) 924-4949 | Fax: (877) 925-4949

www.spsystems.net